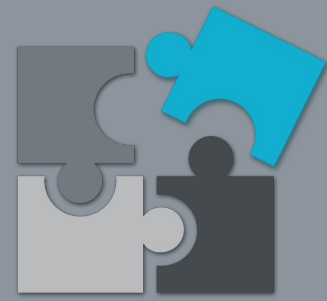




Diskover Data™

Data Management Solution



Solution Brief for Production Studios

Diskover empowers organizations with the knowledge and tools they need to sustainably manage their data and scale their business.

Diskover is a web-based platform that provides a global view of data fragmented across cloud and on-premise storage, allowing users to safely search across all their company's files with a single query.

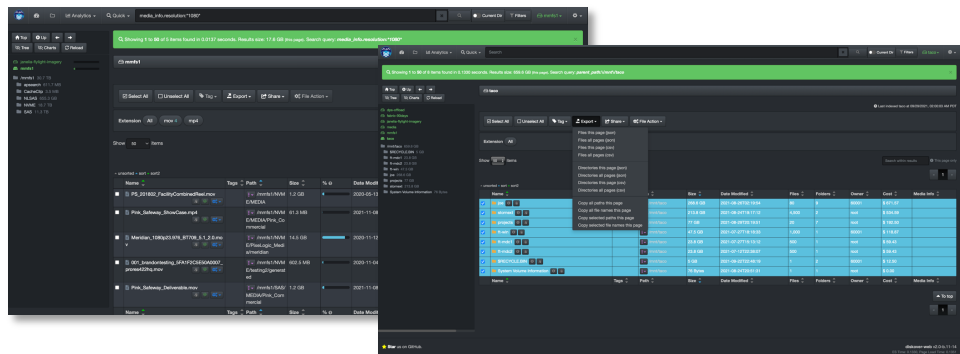
Diskover also offers granular analytics, file-based workflow automation, seamless access to third-party platforms, as well as embraces customers deploying and integrating their own plugins.

Our platform offers end-users read-only indexes of files therefore safeguarding your digital assets and production network.

Diskover's unique architecture allows to scan massive amounts of data, continuously and in parallel, at blazing speed.

Find it. Share it. Tag it.

Launch powerful queries using built-in tools, manual searches, or a combination of both. Export and share results in one click choosing from various options. Manual and automated tags add business context for workflow processes.



Analyze it. Monetize it.

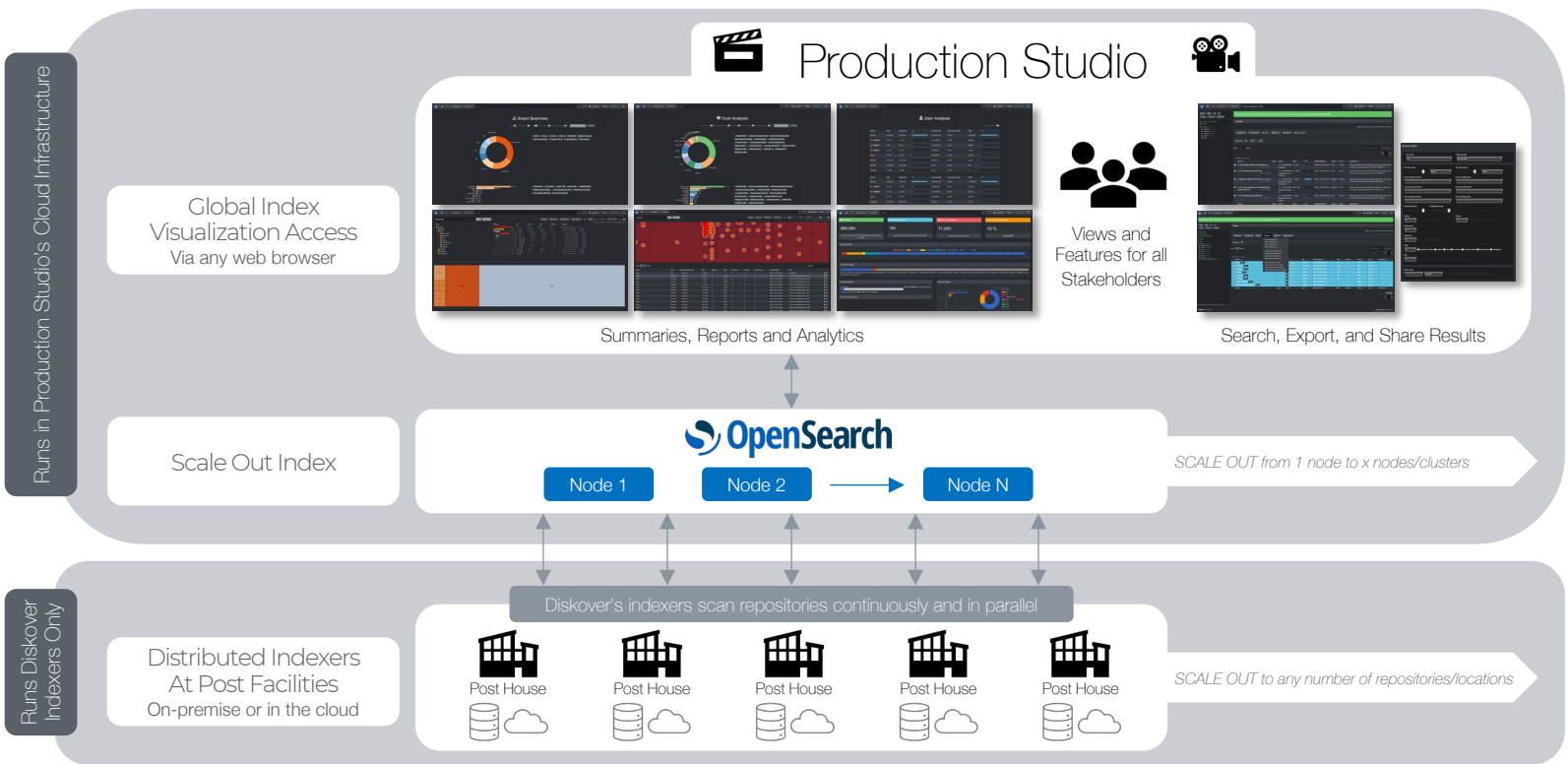
Diskover provides built-in storage cost reporting that can be tailored to granular detail for individual Production Studios and Post Houses. The cost reporting eliminates the need to manually create and tabulate spreadsheets. Furthermore, this information can be supplied directly to project management and scheduling systems via API-based plugins.



Manage it. Curate it.

Through the regular and extra business context metadata harvested during indexing, automated tasks can be scheduled, based on rules, allowing for assets to smartly move along the virtual conveyor belt, allowing for data to be available during production, and the finish results to be delivered, moved, archived, and/or deleted.

The index of all content is stored within a cloud-based Elasticsearch repository, enabling robust search capabilities across all studios and project locations, for both the Production Studio and its suppliers.



Diskover Data | Studio Portal Into Post Houses Content

Diskover provides up-to-date indexes of all files both on-premise and in S3 buckets. The distributed architecture enables the components responsible for index tasks to be geographically distributed to proximity of storage repositories being indexed.

The distributed architecture provides Production Studios the ability to have a “portal” into their scattered projects/data distributed among post facilities providing content services.

The search indexes can be integrated into existing Production Studios’ pipelines via robust, open, industry-standard APIs.

Both Elasticsearch and Diskover are built on open-source architecture and Diskover is delivered as a source.

In addition, Diskover has off-the-shelf plugins to enrich common scheduling and media packages, like Xytech, Telestream Vantage and Glim, CineViewer, and more.

OTHER BUSINESS OUTCOMES

Collective Productivity

All stakeholders can get real-time answers by using tailored tools allowing autonomy and efficiency in their specific relationship with data.

Lower Operating Costs

Through increased productivity and automated workflows, the number of man-hours is significantly reduced. Furthermore, storage space can be efficiently reused through proper data curation instead of buying more expensive storage space.

Production Network Safety

Being read-only and non-proprietary, Diskover keeps your source files secure, on top of plugins allowing users to do their job without accessing the production network which was not possible until now.